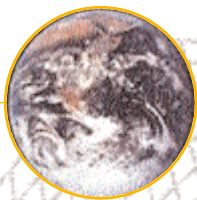




## S-PLUS for ArcView 3.2 GIS®



**S-PLUS for ArcView GIS is a powerful extension to ESRI's ArcView GIS software. With S-PLUS for ArcView GIS, you have easy access to comprehensive and modern statistics and graphics for use with your GIS and spatial data.**

S-PLUS is the choice of leading professionals at major organizations because it combines leading-edge statistical functionality with the ability to create stunning, publication-quality graphics.

S-PLUS for ArcView GIS integrates the powerful statistics and publication-quality graphics of S-PLUS into ArcView GIS.

### Stunning, Publication-Quality Graphs

With S-PLUS for ArcView GIS, you benefit from over eighty 2D and 3D publication-quality graph types available in S-PLUS. With so many options, you can choose the graph type which best represents your data. S-PLUS graphics are easily edited so you have complete control over every detail—just point-and-click to modify any feature of your graph.

### Unique and Powerful Trellis Graphics

The unique visualization techniques in S-PLUS, such as Trellis graphics, offer you a powerful new way to explore your GIS data. With Trellis graphics, you can immediately discover important relationships between two or more variables by segmenting the relationship based on a conditioning variable. By comparing the graphical representation for subsets of your conditioning variable, you gain new insight into your data.

### Classical and Modern Statistical Methods

You get more out of your data with the powerful S-PLUS statistical functionality. With over 4,200 functions, S-PLUS has a complete range of classical and modern statistical methods. Use S-PLUS functions to explore your data, find hidden outliers or exceptional values, or spot trends. You can learn more, get better results, and make better decisions.

### Cutting-edge Spatial Statistics

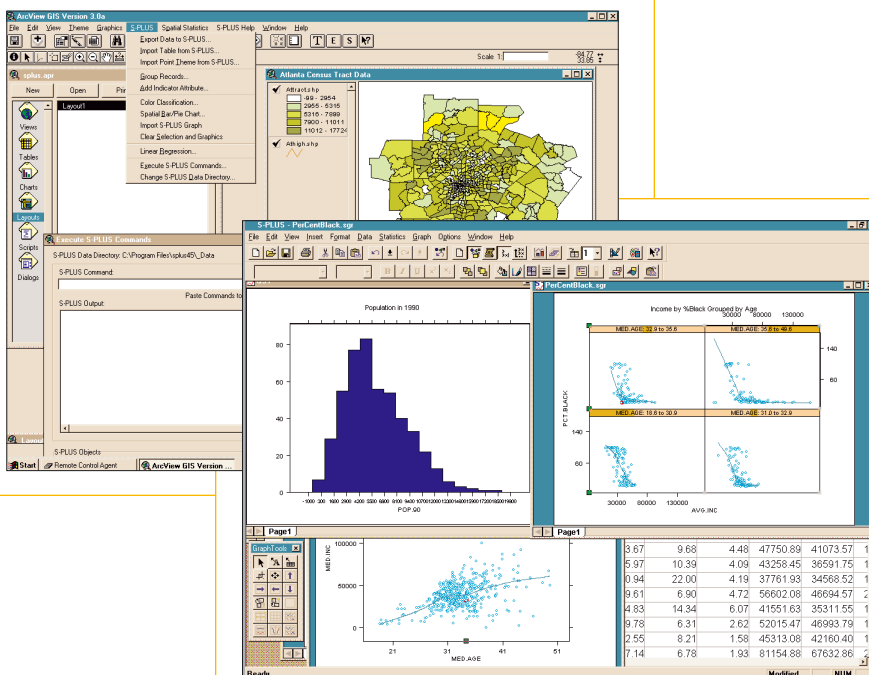
Additionally, S-PLUS for ArcView GIS provides access to spatial statistics in S+SpatialStats, an add-on module to S-PLUS. With S+SpatialStats, users can easily access comprehensive spatial data analysis and spatial statistical modeling tools for geostatistical data, lattice data, and spatial point patterns.

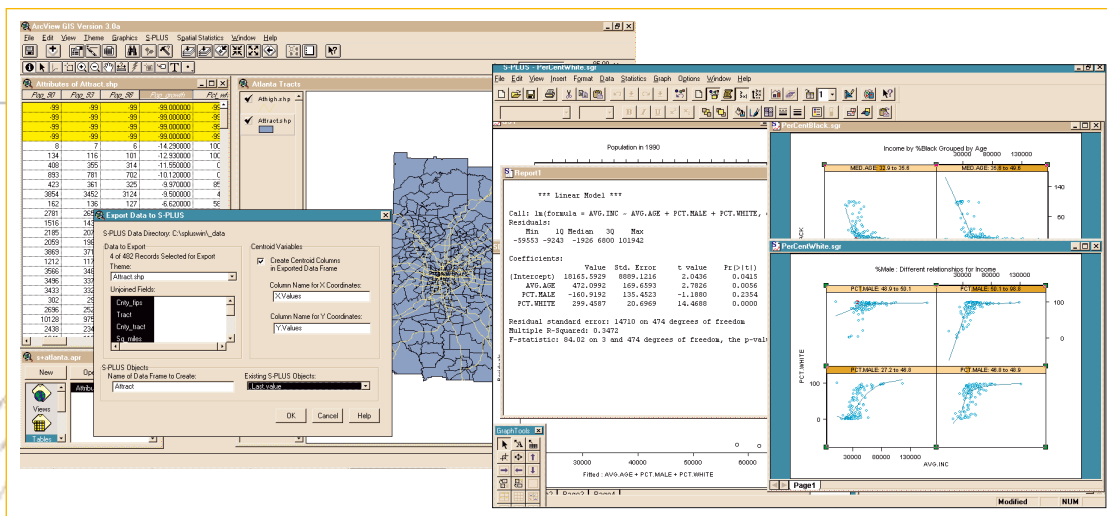
### Easily Transfer Data and Results

S-PLUS for ArcView GIS makes it easy to transport data and results between the two products. Seamlessly move ArcView GIS tabular data to S-PLUS data frames and then return your graphics and analytical results to the ArcView GIS environment. S-PLUS objects are directly accessible from ArcView GIS.

For simple or complex projects, for novice or advanced analysts, S-PLUS for ArcView GIS offers the ability to quickly and easily extract valuable meaning from your GIS data.

**[www.insightful.com](http://www.insightful.com)**





In addition to standard S-PLUS statistics, S-PLUS for ArcView GIS allows you to access spatial statistics available in S+SpatialStats. The powerful statistical functionality and publication-quality graphics available in S-PLUS can significantly enhance the analysis of your GIS data.

## Features

- Fit linear regression models in ArcView GIS using data from themes or data frames
- Plot bar and pie charts in ArcView GIS based on S-PLUS data
- Export attribute data to S-PLUS (optionally calculate polygon centroid coordinates)
- Import S-PLUS data to ArcView GIS tables or point themes
- Import S-PLUS graphs onto a layout
- Basic S-PLUS command line interface from within ArcView GIS
- Preserve groupings and selections made in ArcView GIS for in-depth analysis in S-PLUS
- Graph Creation wizard

With the S+SpatialStats module:

- Spatial autocorrelation illustrates global relationships between variable values as a consequence of their location
- Local spatial association can highlight localized clusters of data that are spatially correlated
- Spatial regression depicts relationships between variables for each spatial unit, given their spatial locations as represented by a neighborhood structure
- Model variables may be selected from themes or S-PLUS data sets
- Supports Moran's I index and Geary's c measures of correlation
- Build neighbor weight matrices based on adjacency as well as distance between sampling units

## System Requirements

- S-PLUS for ArcView GIS requires the S-PLUS data analysis package
- ArcView GIS 3.0a to 3.2 only
- S+SpatialStats module for additional spatial statistics methods (optional)
- Pentium processor with 96MB of memory running Microsoft Windows NT, ME, 95, 98, 2000.



### Global Headquarters

1700 Westlake Avenue North Suite 500  
Seattle, WA 98109  
Tel: 206.283.8802  
Fax: 206.283.6310  
info@insightful.com

### Insightful Switzerland

Christoph Merian-Ring 11  
4153 Reinach  
Switzerland  
Tel: +41 61 717 9340  
Fax: +41 61 717 9341  
info.ch@insightful.com

### Insightful UK

5th Floor, Network House  
Basing View, Basingstoke  
Hampshire RG21 4HG  
United Kingdom  
Tel: +44 (0) 1256 339800  
Fax: +44 (0) 1256 339839  
info.uk@insightful.com

### Insightful France

7, rue Auber  
31000 Toulouse  
France  
Tel: +33 0 5 62 27 70 60  
Fax: +33 0 5 62 27 70 61  
info.fr@insightful.com